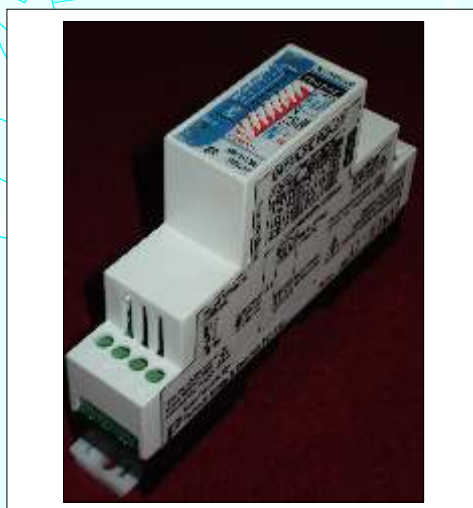


PROTIME



## N22 Series Impulse Relay (Engine Starting Relay)

### Special Features

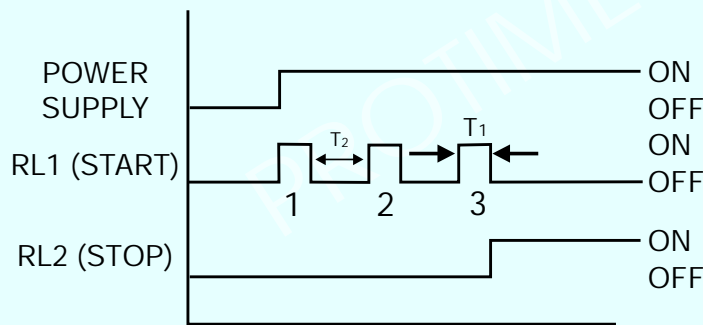
- Most compact Engine Starting relay
- Only of its kind Micro controller based IMPULSE RELAY
- Can work up to 30% low input supply without any timing error
- User selectable No. of attempts

### Technical Data

1) supply Voltage	- 12-24VDC
2) Output Contacts	- a) 1 change over (RL1) ON/OFF adjustable contact. b) 1 change over (RL2) for alarm or Indication after impulses completes.
3) Switching duty	- 6A resistive at 250V AC or 24V DC
4) Electrical Life	- 10 operation at designed switching duty
5) Range	- No of Attempts (3,5,8,10)
6)Time Delays	- ON Time (1,2,3,4,5) / OFF Time (2,4,6,8,10)
7) Mounting	- Din channel or wall mounting
8) Approximate Weight	- 100gm
9) Dimension	- 22.5mm(W) X 110(D) X 73.5mm(H)

OPERATION

N22-IR is a ready made solution for engine starting circuits used for D. G. Sets, fire fighting pumps etc. It has two relay outputs viz. RL1 & RL2. Relay RL1 provides starting impulses where in the duration of the impulse (ON Time) & the time between the two impulses (OFF Time) is user settable. Relay RL2 provides 'FAILS TO START' alarm/indication in case all the number of attempts to start engine by RL1 have failed. Number of attempts is user selectable. N22-IR has indications for power supply, RL1 ON, & RL2 ON.



T<sub>1</sub> - ON TIME for RL1 (settable)  
 T<sub>2</sub> - OFF TIME for RL1 (settable)

Connection Details:

**IMPULSE RELAY**

MODEL: N22-IR/uC

CRANK TIME SETTINGS							
ON TIME				OFF TIME			
A	B	C	Sec.	X	Y	Z	Sec.
1	1	1	1	1	1	1	2
1	0	0	2	1	0	0	4
0	1	0	3	0	1	0	6
0	0	1	4	0	0	1	8
0	0	0	5	0	0	0	10

**CONNECTION DETAILS:**

**No. of Attempts Settings:**

3

5

8

10

Source: A1-A2

12V DC

24V DC

**CONTACTS:**

5A Resistive @ 230V AC/24V DC

Reinforced Insulation (Earth not Required)

**Caution:** No Operator serviceable Parts inside, DO NOT OPEN the Enclosure

RL1- START (Crank)

RL2- STOP (Lock out)

\*Set No. of Attempts & Crank ON/OFF TIME before giving Supply

Manufactured By :- **Protech Engg. & Controls Pvt. Ltd.** Sr.No.: PE/